



FOCUS ON THE FACTORY
Bull Sale

Saturday

March 2, 2024

Headwaters Livestock Auction

Three Forks, Montana

Lunch at noon • Sale at 1:00 pm

Selling **55**
ANGUS BULLS

Cattle Producers & Friends,

Our family is very excited to welcome you to our first annual “Focus on the Factory” bull sale.

Thank you for taking the time to review the set of bulls that we are offering this year! We look forward to visiting with you on March 2nd at Headwaters Livestock in Three Forks, MT.

For over 30 years Kimm Angus has been and continues to be a family run operation. We handle all aspects of the day to day management and responsibilities of our cow herd which has given us firsthand knowledge on every cow in the herd. We do not tolerate cows with disposition issues or poor mothering ability. The cows must have good foot and leg structure and good udders.

With our “Focus on the Factory” breeding philosophy we select our bulls by what kind of females they will leave in our herd. We believe that behind every great bull calf or steer calf is an outstanding mother cow.

The bulls are being developed by Phil Veltkamp and his crew at Veltkamp Feedlot. The bulls are being fed a high-roughage ratio with a target of 3lbs per day gain. All of the bulls have been HD 50K tested to provide added EPD accuracy and parent verified. They are fertility tested and ready to go to work for you.

All of our bulls are fully guaranteed for one full breeding season, if you have a problem with a bull let us know.

We welcome you to take a look at the bulls any time prior to the sale just let us know and we can meet you at the feedlot.

If you are unable to attend the sale but are interested in purchasing a bull, the sale will be live on the Northern Livestock Video Auction. You will need to get registered with them 24 hours in advance.

We want to thank Ron Frye for all of his help and advice as we navigate our first Kimm Angus bull sale.

*We feed ‘em - we breed ‘em - we calve ‘em - we know ‘em
so if you have any questions give us a call!*

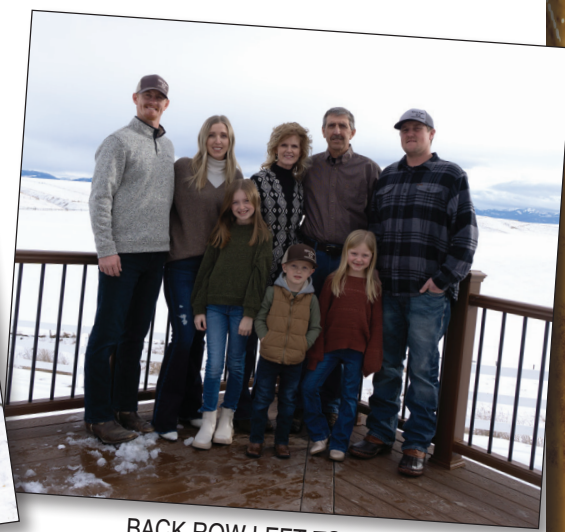
The Kimms



RILEY



LEFT TO RIGHT:
HARVE, GRETCHEN, REECE



BACK ROW LEFT TO RIGHT,
JAMES, KELSIE, DENISE, TOM, RILEY.
FRONT ROW, : OLIVIA, RYAN, IVY



FOCUS ON THE FACTORY *Bull Sale*

Headwaters Livestock Auction
Three Forks, Montana

Saturday **March 2, 2024**
Lunch at noon • Sale at 1:00 pm

AUCTIONEER:

Roger Jacobs.....406-698-7686

SALE DAY PHONES:

Tom Kimm.....406-209-2653
Riley Kimm.....406-580-6172
Harve Kimm406-579-4532
Headwaters Livestock406-285-0502

LIVESTOCK PRESS REPRESENTATIVES:

Jared Murnin, Western Ag Reporter406-321-1542
John Andras, Western Livestock Journal.....406-670-5074
Jace Thompson 406-690-4151
Ron Frye Marketing..... 406-600-7514

LUNCH: Will be served on sale day beginning at 12pm.

DRIVING DIRECTIONS: From Interstate I-90, take exit 274 west of Three Forks Mt. Turn north and continue for approximately 0.9 miles before turning west on Wheatland road. Travel roughly 0.4 miles and Headwaters Livestock will be on your left.

LIABILITY: All persons who attend the sale do so at their own risk. Kimm Angus and Headwaters Livestock assume no liability, legal or otherwise, for any accidents which may occur.

TERMS AND CONDITIONS: All cattle sell under the standard terms and conditions as adopted by the American Angus Association.

RETAINED INTEREST: Kimm Angus is retaining 1/3 semen interest on all bulls in the sale. Natural use and salvage value belong to the buyer.

GUARANTEE: All bulls are guaranteed for the first breeding season.

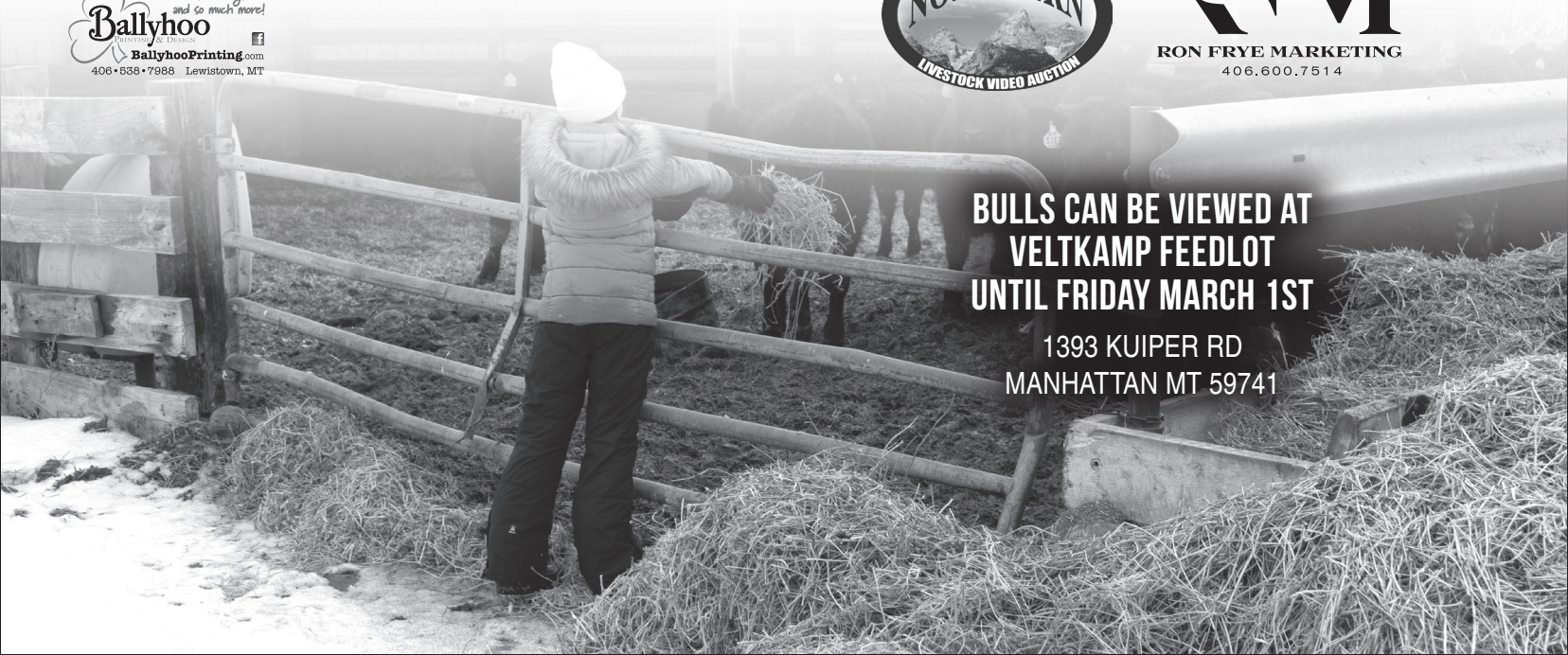
DELIVERY: Free delivery available in Montana and surrounding states.

VIDEO: Video of the bulls can be viewed at ronfryemarketing.com and also northernlivestockvideo.com.

How do you Ballyhoo?
With this catalog
and so much more!
Ballyhoo
BallyhooPrinting.com
406-838-7988 Lewistown, MT



RFM
RON FRYE MARKETING
406.600.7514



**BULLS CAN BE VIEWED AT
VELTKAMP FEEDLOT
UNTIL FRIDAY MARCH 1ST**

1393 KUIPER RD
MANHATTAN MT 59741

Bid through Northern Livestock Video Auction's NEW Online Bidding Platform!

Desktop and Mobile Friendly



Desktop

1. It is best to use the Google Chrome web browser.
2. **Pre-Register at least one day prior to the sale.**
3. Go to bid.northernlivestockvideo.com and click "Get Approved to Bid".
4. Doing this will prompt you to create an account, after which you will fill out a bidder approval application.
5. Once Approved, an email will be sent to the email account provided, please click the link in that email to activate your account and a buyer number will be provided.
6. On sale day (after approval), visit www.northernlivestockvideo.com to view and bid!

Mobile

Use your mobile device to download the Northern Livestock Auction App and follow the above steps to get approved.

There is an instructional video on how to register to bid on our website, www.northernlivestockvideo.com

Phone Bidding:

Anyone wanting to use the Northern Livestock phone bank to bid must pre-register and have a bid number to bid on the phone. **To register with NLVA call 866-616-5035 Before Sale Day.**

Northern's Sale Day Bid Line: **1-406-245-0889.**

View the Online CATALOG and VIDEO CLIP of each BULL selling at www.northernlivestockvideo.com.

Bidders who are successful in making purchases will be contacted following the sale to make payment and delivery arrangements.

For technical assistance with Internet Viewing and Bidding Questions, call Sam Fraser 406-860-0590.

WELCOME TO THE INAUGURAL KIMM ANGUS BULL SALE!

For many registered and commercial cattlemen in the Gallatin Valley and Southwestern Montana, the name Kimm Angus is synonymous with excellence. While this marks their Inaugural sale, the legacy of selling bulls and raising top-notch Angus cattle spans decades. As contributors to the South Montana Angus bull sale, Kimm Angus has always been a cornerstone breeder, consistently presenting a high-quality set of bulls at the bull test.

The time has now arrived for Tom and Riley to embark on their own bull sale venture, and you, the esteemed buying public, stand to benefit. This inaugural event offers you the opportunity to acquire bulls from a breeder boasting decades of experience in breeding Angus cattle. Tom and Riley, known for their commitment to quality, have built a reputation for standing firmly behind their products, where their word is their bond.

The sale's slogan perfectly encapsulates their philosophy – "Focus On The Factory." It's a sentiment I can only admire, wishing I had coined it myself. Since I have known Tom, he has consistently emphasized one core message: "It's all about the Angus cow." This isn't just a catchy phrase or a clever advertising ploy; it's a fundamental belief shaping their breeding program. Their focus is on genetics that continually enhance the qualities of each generation, creating better, more resilient females. Riley, sharing his father's mindset, has actively contributed to a program dedicated to crafting females with fertility, longevity, structural soundness, performance, and the desired phenotype.

If you have any inquiries about the offerings or require assistance on sale day, please don't hesitate to give me a call. We're here to ensure your experience with the Inaugural Kimm Angus Bull Sale is exceptional.


MARKETING
406.600.7514

Explanation of EPDs

1
BULL REG: 20823479 BIRTH DATE: 01/11/23 TATTOO: 323

KA BLACK MASS 323

B BAR WINDY 79 CROOK MT REALLY WINDY 141 #
B BAR BLACK MASS 3045 B BAR LADY JEWEL 116 #
 B BAR QUEEN 304 # SITZ RLS ALLIANCE 7164
 B BAR QUEEN 557 #

V D A R SONNY BOY 1194 V D A R HERO 7072
KA LASS 1637 V D A R LASS 2582
 KA LASS 014 COLE CREEK BLACK CEDAR 46P #
 K A LASS 1007

Birth Wt	205 Wt	365 Wt	Dam Wean Prod		HD50K									
86	768	1166	5 WR 105		CED	BW	WW	YW	Milk	SC	Marb	RE	\$M	\$W
+4	+2.4	+63	+101	+24	+1.53	+1.1	+0.82	+77	+59					

Calving Ease Direct (CED) EPD: is expressed as a difference in percentage of unassisted births, with a higher value indicating greater calving ease in first-calf heifers. It predicts the average difference in ease with which an sire's calves will be born when he is bred to first-calf heifers.

Birth (BW) EPD: The birth weight EPD is a predictor of an individual's contribution to its progeny's weight at birth and is a comparison of breed average, measured in pounds.

Weaning (WW) EPD: The weaning weight EPD is the amount of increase or decrease in weaning weight you could expect from the progeny of a bull compared to an average bull in the breed for weaning weight, measured in pounds.

Yearling Weight (YW) EPD: The yearling weight EPD is the amount of increase or decrease in yearling weight one could expect from the progeny of a bull compared to an average bull in the breed for yearling weight, measured in pounds.

Milk EPD: The milk EPD is a predictor of a sire's genetic merit for milk and mothering ability expressed in his daughters, measured in pounds. It is that part of weaning weight attributed to milk production.

Actual Birth Weight: The actual weight of the calf within 24 hours after birth, measured in pounds.

205 Day Weight: The weaning weight of the calf adjusted to a common age of 205 days and adjusted for the age of the dam, measured in pounds.

205 Day Ratio: A direct comparison of one calf to all others in his contemporary group. A weaning ratio of 100 is always average.

However, some individuals are "average" only because their contemporary group was small.

Scrotal Circumference EPD (SC): Expressed in centimeters, is a predictor of the difference in transmitting ability for scrotal size compared to that of other sires.

Marbling EPD (Marb): Expressed as a fraction of the difference in USDA marbling score of a sire's progeny compared to progeny of other sires.

Ribeye Area EPD (RE): Expressed in square inches, is a predictor of the difference in ribeye area of a sire's progeny compared to progeny of other sires.

Maternal Weaned Calf Value (\$M): An index value expressed in dollars per head, predicts profitability differences from conception to weaning with the underlying breeding objective assuming that individuals retain their own replacement females within herd and sell the rest of the cull female and all male progeny as feeder calves.

Weaned Calf Value (\$W): An index value expressed in dollars per head, is the expected avg difference in future progeny performance for preweaning merit.

WHY WE TEST WITH HD50K™ FROM ZOETIS



Powered by HD50K™ from Zoetis, our cattle sell with genomic-enhanced expected progeny differences (GE-EPDs).

With GE-EPDs, we're confident that customers like you can minimize risk in their investment — and enhance the productivity of your cattle.

The benefits of buying HD50K-tested bulls and heifers goes beyond added accuracy for the complete range of traits for more productive daughters and progeny. You'll know early on what that animal is likely to transmit to its offspring and potential for performance in the feedlot and on the rail. You can also match the HD50K tested sires you buy from us to replacement heifers — through GeneMax® Advantage™ — to make better-informed breeding and management decisions down the road.

Knowing an animal's potential. Continuous progress of your herd. That's why we test with HD50K.

For more information: Contact your Zoetis representative
 Call Zoetis customer service at 877-233-3362
 Email Zoetis at geneticservice@zoetis.com
<https://www.zoetis.com/animal-genetics/beef/index.aspx>

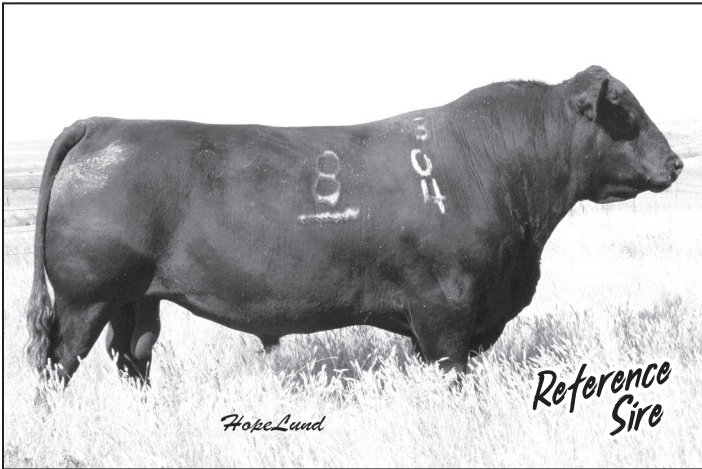
All trademarks are the property of Zoetis Services LLC or a related company or a licensor unless otherwise noted. GeneMax is a registered trademark of Angus Genetics, Inc. ©2019 Zoetis Services LLC. All rights reserved. 50K-00020

Number of progeny records in conventional genetic evaluation needed to achieve the same accuracy as GE-EPDs powered by HD50K

Trait	Progeny Equivalents
Heifer Pregnancy (HP)	17
Calving Ease Direct (CED)	26
Birth Weight (BW)	23
Milk	36
Docility (Doc)	12
Claw Set (Claw)	10
Foot Angle (Foot)	10
Scrotal Circumference (SC)	15
Weaning Weight (WW)	27
Yearling Weight (YW)	23
Dry Matter Intake (DMI)	12
Yearling Height (YH)	17
Mature Weight (MW)	15
Carcass Weight (CW)	15
Marbling (Marb)	11
Ribeye Area (RE)	17
Fat Thickness (Fat)	14



Reference Sires



Reference Sire **B BAR BLACK MASS 3045**
 REG: *18137165 BIRTH DATE: 02/09/2015 TATTOO: 3045

CROOK MT REALLY WINDY 141 # A A R REALLY WINDY 1205 #
 B BAR WINDY 79 REVOLUTION 155 OF CROOK MT
 B BAR LADY JEWEL 116 # RA JOE HERO
 B BAR LADY JEWEL 884
 SITZ RLS ALLIANCE 7164 SITZ ALLIANCE 6595 #
 B BAR QUEEN 304 # SITZ RLS EISA EVERGREEN 4451 #
 B BAR QUEEN 557 # S A V BUSHWACKER 3119 #
 B BAR QUEEN TIME ET 4014

CED	BW	WW	YW	Milk	SC	Marb	RE	SM	SW
+10	-1.7	+46	+81	+27	+1.24	+0.17	+0.81	+86	+54

Sire of Lots 1-4, 29-32, 51 and 52

The Black Mass offspring are structurally sound cattle. We are excited about the calves we have, the bulls have shown great growth potential. The daughters are as uniform of a group that you could want, if you've seen one you've seen them all!



Reference Sire **WMR TIMELESS 081**
 REG: 17083256 BIRTH DATE: 01/16/2011 TATTOO: 081

LEACHMAN RIGHT TIME 338-5605 # HYLINE RIGHT TIME 338 #
 WMR TIMELESS 458 # LEACHMAN ERICA 1201
 WMR BLACKCAP 521 W M R DATELINE 210
 W M R BLACKCAP 043
 CONNEALY PACKER 547 # FELTONS MEAT PACKER 62 #
 WMR LUCY 910 # BESTRELLE OF CONANGA 539
 WMR LUCY 720 H A IMAGE MAKER 0415 #
 WMR LUCY 508

CED	BW	WW	YW	Milk	SC	Marb	RE	SM	SW
+5	+2.7	+76	+132	+25	+1.06	+0.63	+0.35	+64	+65

Sire of Lots 5-8 and 33-37

081 has an outcross pedigree and balanced EPD's. The calves are thick and have tremendous growth potential. We are calving in our first set of daughters from 081, they are proving to be excellent mothers.



Reference Sire **VDAR MANHATTAN 1379**
 REG: 19411376 BIRTH DATE: 01/10/2019 TATTOO: 1379

H A IMAGE MAKER 0415 # HERO 6267 OF R R 2418 #
 W R A MIRROR IMAGE T10 # H A RITO BLACKCAP 9038
 W R A EILEEN BAR 115P CAR DUKE 104 #
 W R A EILEEN BAR 115M
 V D A R CEDAR WIND 8111 # COLE CREEK CEDAR RIDGE 1V #
 V D A R LASS 4113 # V D A R CHLOE 9727
 V D A R LASS 2559 # V D A R SENTINEL 3016
 V D A R LASS 6305

CED	BW	WW	YW	Milk	SC	Marb	RE	SM	SW
+10	-.7	+53	+81	+33	+0.69	+0.20	-0.20	+75	+66

Sire of Lots 9-12 and 40-45

We have used Manhattan across the board on heifers and cows, the calves come easy, get right up and get going! Manhattan comes from a cow family known for growth and thickness. The daughters in our herd are doing a fantastic job, raising some of our best calves and breeding right back up in the Spring.

Reference Sires



Reference Sire

VDAR WINSTON 2150

REG: *19701578

BIRTH DATE: 01/06/2020

TATTOO: 2150

V D A R CHURCHILL 1063
V D A R WINSTON 2165
V D A R LASS 3114

DFA HERO 6017 #
V D A R FOREVER LADY 1409 #
CROOK MT REALLY WINDY 141 #
V D A R LASS 5714

V D A R SONNY BOY 1194
VDAR LASS 8148
V D A R LASS 5836

D A R HERO 7072
V D A R LASS 2582
V D A R STOUT 1623
V D A R LASS 0406

CEB	BW	WW	YW	Milk	SC	Marb	RE	\$M	\$W
+7	+.9	+61	+110	+28	+.69	+.45	+.03	+43	+56

Sire of Lots 13-16, 53 and 54

This is a bull that we are very excited about! They are easy calving and will add maternal value. We are calving in our first set of 215 heifers this year and they might be the best heifers in our group! They are great mothers with perfect udder structure and temperament. The 215 daughters in our herd have all the potential to become the foundation of our "Focus on the Factory" mentality.





1 KA BLACK MASS 323

BULL REG: 20823479 BIRTH DATE: 01/11/23 TATTOO: 323

B BAR WINDY 79 CROOK MT REALLY WINDY 141 #
B BAR BLACK MASS 3045 B BAR LADY JEWEL 116 #
 B BAR QUEEN 304 # SITZ RLS ALLIANCE 7164
 B BAR QUEEN 557 #
 V D A R SONNY BOY 1194 V D A R HERO 7072
KA LASS 1637 V D A R LASS 2582
 KA LASS 014 COLE CREEK BLACK CEDAR 46P #
 K A LASS 1007

Birth Wt	205 Wt	365 Wt	Dam Wean Prod			HDSOK				
86	768	1166	5 WR 105							
CED	BW	WW	YW	Milk	SC	Marb	RE	SM	SW	
+4	+2.4	+63	+101	+24	+1.53	+.11	+.82	+.77	+.59	

3 KA BLACK MASS 093

BULL REG: 20823472 BIRTH DATE: 01/06/23 TATTOO: 093

B BAR WINDY 79 CROOK MT REALLY WINDY 141 #
B BAR BLACK MASS 3045 B BAR LADY JEWEL 116 #
 B BAR QUEEN 304 # SITZ RLS ALLIANCE 7164
 B BAR QUEEN 557 #
 VDAR MANHATTAN 1379 W R A MIRROR IMAGE T10 #
KA HAZEL 2179 V D A R LASS 4113 #
 KA HAZEL 1825 # V D A R STOUT 1623
 KA HAZEL 1555

Birth Wt	205 Wt	365 Wt	Dam Wean Prod			HDSOK				
74	797	1298	1 WR 120							
CED	BW	WW	YW	Milk	SC	Marb	RE	SM	SW	
+6	+0.9	+71	+122	+34	+.50	+.06	+.58	+.81	+.77	



4 KA BLACK MASS 113

BULL REG: 20823474 BIRTH DATE: 01/07/23 TATTOO: 113

B BAR WINDY 79 CROOK MT REALLY WINDY 141 #
B BAR BLACK MASS 3045 B BAR LADY JEWEL 116 #
 B BAR QUEEN 304 # SITZ RLS ALLIANCE 7164
 B BAR QUEEN 557 #
 VDAR MANHATTAN 1379 W R A MIRROR IMAGE T10 #
KA LASS 2120 V D A R LASS 4113 #
 KA LASS 1454 K OUPAL JUNEAU 797 #
 K A LASS 1007

Birth Wt	205 Wt	365 Wt	Dam Wean Prod			HDSOK				
78	787	1205	1 WR 118							
CED	BW	WW	YW	Milk	SC	Marb	RE	SM	SW	
+2	+0.6	+63	+100	+28	+1.49	+.29	+.46	+.83	+.69	

2 KA BLACK MASS 103

BULL REG: 20823473 BIRTH DATE: 01/06/23 TATTOO: 103

B BAR WINDY 79 CROOK MT REALLY WINDY 141 #
B BAR BLACK MASS 3045 B BAR LADY JEWEL 116 #
 B BAR QUEEN 304 # SITZ RLS ALLIANCE 7164
 B BAR QUEEN 557 #
 V D A R SONNY BOY 1194 V D A R HERO 7072
KA MISS WIX 2141 V D A R LASS 2582
 KA MISS WIX 1829 KA WALK ON 155
 KA MISS WIX 008

Birth Wt	205 Wt	365 Wt	Dam Wean Prod			HDSOK				
82	821	1291	1 WR 123							
CED	BW	WW	YW	Milk	SC	Marb	RE	SM	SW	
-2	+4	+74	+124	+32	+1.64	+.26	+.76	+.58	+.68	





5 KA TIMELESS 343

BULL REG: 20823481 BIRTH DATE: 01/12/23 TATTOO: 343

WMR TIMELESS 458 # LEACHMAN RIGHT TIME 338-5605 #
WMR TIMELESS 081 WMR BLACKCAP 521
 WMR LUCY 910 # CONNEALY PACKER 547 #
 WMR LUCY 720
 V D A R FOUR CORNERS 8232 DFA HERO 6017 #
KA LASS 1402 G K A F ROSETTA 102 #
 KA LASS 1217 V D A R REALLY WINDY 4097 #
 KA LASS 014

Birth Wt	205 Wt	365 Wt	Dam Wean Prod						
89	693	1197	7 WR 95						
CED	BW	VW	YW	Milk	SC	Marb	RE	SM	SW
+7	-0.2	+50	+88	+30	+0.06	+0.60	+0.26	+0.77	+0.58

7 KA TIMELESS 423

BULL REG: 20823486 BIRTH DATE: 01/13/23 TATTOO: 423

WMR TIMELESS 458 # LEACHMAN RIGHT TIME 338-5605 #
WMR TIMELESS 081 WMR BLACKCAP 521
 WMR LUCY 910 # CONNEALY PACKER 547 #
 WMR LUCY 720
 V D A R CHURCHILL 1063 DFA HERO 6017 #
KA HAZEL 1633 # V D A R FOREVER LADY 1409 #
 KA HAZEL 040 CROOK MT REALLY WINDY 141 #
 KA HAZEL 6009

Birth Wt	205 Wt	365 Wt	Dam Wean Prod						
93	706	1135	6 WR 102						
CED	BW	VW	YW	Milk	SC	Marb	RE	SM	SW
+5	+2.1	+79	+132	+26	+1.20	+0.45	+0.30	+0.65	+0.73

6 KA TIMELESS 063

BULL REG: 20823470 BIRTH DATE: 01/06/23 TATTOO: 063

WMR TIMELESS 458 # LEACHMAN RIGHT TIME 338-5605 #
WMR TIMELESS 081 WMR BLACKCAP 521
 WMR LUCY 910 # CONNEALY PACKER 547 #
 WMR LUCY 720
 KOUPAL JUNEAU 797 # O C C JUNEAU 807J #
KA BETTY 1558 KOUPALS ELBA 187
 KA BETTY 7024 HERO 6267 OF R R 2418 #
 KA BETTY 5027

Birth Wt	205 Wt	365 Wt	Dam Wean Prod						
64	751	1218	5 WR 100						
CED	BW	VW	YW	Milk	SC	Marb	RE	SM	SW
+3	+2.6	+77	+119	+21	+0.94	+0.45	+0.49	+0.57	+0.69



8 KA TIMELESS 723

BULL REG: 20823498 BIRTH DATE: 01/21/23 TATTOO: 723

WMR TIMELESS 458 # LEACHMAN RIGHT TIME 338-5605 #
WMR TIMELESS 081 WMR BLACKCAP 521
 WMR LUCY 910 # CONNEALY PACKER 547 #
 WMR LUCY 720
 V D A R SONNY BOY 1194 V D A R HERO 7072
KA MISS WIX 1851 V D A R LASS 2582
 KA MISS WIX 1501 KA BLACK CEDAR 080
 KA MISS WIX 1323

Birth Wt	205 Wt	365 Wt	Dam Wean Prod						
81	659	1139	4 WR 102						
CED	BW	VW	YW	Milk	SC	Marb	RE	SM	SW
+13	+0.3	+59	+108	+31	+0.81	+0.47	+0.62	+0.85	+0.65





9

KA MANHATTAN 843

BULL REG: 20823501 BIRTH DATE: 01/24/23 TATTOO: 843

W R A MIRROR IMAGE T10 # H A IMAGE MAKER 0415 #
 V D A R LASS 4113 # V R A EILEEN BAR 115P
 V D A R CEDAR WIND 8111 #
 V D A R LASS 2559 #
 V D A R STOUT 1623 V D A R BLACK CEDAR 8380
 KA MARIAS 1627 V D A R LASS 0464
 KA MARIAS 1111 V D A R REALLY WINDY 4097 #
 KA MARIAS 9013

Birth Wt	205 Wt	365 Wt	Dam Wean Prod		HDSOK									
84	690	1135	5 WR 102		CED	BW	WW	YW	Milk	SC	Marb	RE	SM	SW
+10	-0.2	+49	+76	+29	+45	+20	-0.03	+63	+59					

11

KA MANHATTAN 223

BULL REG: 20823476 BIRTH DATE: 01/09/23 TATTOO: 223

W R A MIRROR IMAGE T10 # H A IMAGE MAKER 0415 #
 V D A R LASS 4113 # V R A EILEEN BAR 115P
 V D A R CEDAR WIND 8111 #
 V D A R LASS 2559 #
 V D A R STOUT 1623 V D A R BLACK CEDAR 8380
 KA LASS 1608 V D A R LASS 0464
 KA LASS 1421 V D A R REALLY WINDY 4097 #
 KA LASS 4007

Birth Wt	205 Wt	365 Wt	Dam Wean Prod		HDSOK									
90	629	1117	4 WR 100		CED	BW	WW	YW	Milk	SC	Marb	RE	SM	SW
+6	+1.6	+62	+101	+35	+58	+0.08	+0.06	+62	+71					

10

KA MANHATTAN 333

BULL REG: 20823480 BIRTH DATE: 01/12/23 TATTOO: 333

W R A MIRROR IMAGE T10 # H A IMAGE MAKER 0415 #
 V D A R LASS 4113 # V R A EILEEN BAR 115P
 V D A R CEDAR WIND 8111 #
 V D A R LASS 2559 #
 V D A R STOUT 1623 V D A R BLACK CEDAR 080
 KA LUCY 2157 V D A R LASS 3133
 KA LUCY 1312 V D A R REALLY WINDY 4097 #
 KA LUCY 9047

Birth Wt	205 Wt	365 Wt	Dam Wean Prod		HDSOK									
74	700	1137	1 WR 105		CED	BW	WW	YW	Milk	SC	Marb	RE	SM	SW
+11	+0.3	+60	+104	+32	+57	+28	+0.05	+54	+64					

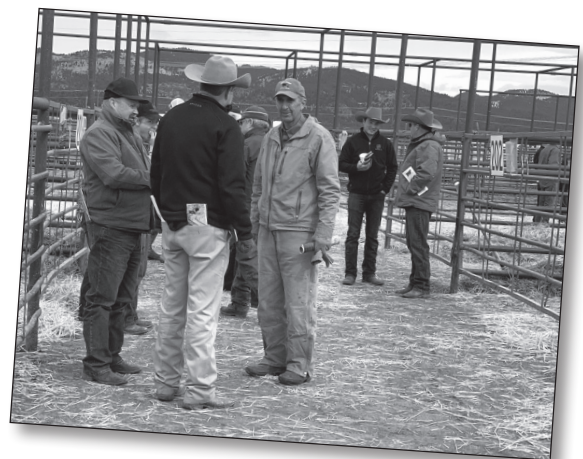
12

KA MANHATTAN 383

BULL REG: 20823484 BIRTH DATE: 01/12/23 TATTOO: 383

W R A MIRROR IMAGE T10 # H A IMAGE MAKER 0415 #
 V D A R LASS 4113 # V R A EILEEN BAR 115P
 V D A R CEDAR WIND 8111 #
 V D A R LASS 2559 #
 V D A R STOUT 1623 V D A R BLACK CEDAR 080
 KA BEAUTY 1519 V D A R LASS 3133
 KA BEAUTY 1134 V D A R REALLY WINDY 4097 #
 KA BEAUTY 3020

Birth Wt	205 Wt	365 Wt	Dam Wean Prod		HDSOK									
73	638	1129	5 WR 97		CED	BW	WW	YW	Milk	SC	Marb	RE	SM	SW
+9	-0.7	+55	+101	+31	+95	+41	+42	+66	+61					





15 KA WINSTON 273
 BULL REG: 20825529 BIRTH DATE: 01/11/23 TATTOO: 273

V D A R WINSTON 2165 V D A R CHURCHILL 1063
 V D A R LASS 3114
VDAR WINSTON 2150
 VDAR LASS 8148 V D A R SONNY BOY 1194
 V D A R LASS 5836

V D A R CEDAR WIND 5126 V D A R CEDAR WIND 8111 #
KA HAZEL 2105 V D A R BEAUTY 4321 #
 KA HAZEL 1903 HA YELLOWSTONE 4025
 KA HAZEL 1715

Birth Wt	205 Wt	365 Wt	Dam Wean Prod						
68	747	1072	1 WR 112						
CED	BW	VW	YW	Milk	SC	Marb	RE	SM	\$W
+10	-0.7	+56	+102	+31	+7.5	+3.6	+0.9	+51	+61

13 KA WINSTON 773
 BULL REG: 20825532 BIRTH DATE: 01/22/23 TATTOO: 773

V D A R WINSTON 2165 V D A R CHURCHILL 1063
VDAR WINSTON 2150 V D A R LASS 3114
 VDAR LASS 8148 V D A R SONNY BOY 1194
 V D A R LASS 5836

V D A R CEDAR WIND 5126 V D A R CEDAR WIND 8111 #
KA LUCY 2155 V D A R BEAUTY 4321 #
 KA LUCY 1622 KA LUCY 8020

Birth Wt	205 Wt	365 Wt	Dam Wean Prod						
75	726	1200	1 WR 109						
CED	BW	VW	YW	Milk	SC	Marb	RE	SM	\$W
+9	+1.1	+78	+129	+33	+1.77	+41	+12	+48	+78

16 KA WINSTON 463
 BULL REG: 20825530 BIRTH DATE: 01/14/23 TATTOO: 463

V D A R WINSTON 2165 V D A R CHURCHILL 1063
VDAR WINSTON 2150 V D A R LASS 3114
 VDAR LASS 8148 V D A R SONNY BOY 1194
 V D A R LASS 5836

KA BLACK CEDAR 080 COLE CREEK BLACK CEDAR 46P #
KA LASS 2183 K A MISS WIX 8021 #
 KA LASS 1909 VDAR GALLATIN 7586
 KA LASS 1794

Birth Wt	205 Wt	365 Wt	Dam Wean Prod						
73	701	1099	1 WR 105						
CED	BW	VW	YW	Milk	SC	Marb	RE	SM	\$W
+10	-0.7	+49	+100	+31	+7.0	+5.2	+0.4	+34	+49



14 KA WINSTON 123
 BULL REG: 20825527 BIRTH DATE: 01/08/23 TATTOO: 123

V D A R WINSTON 2165 V D A R CHURCHILL 1063
VDAR WINSTON 2150 V D A R LASS 3114
 VDAR LASS 8148 V D A R SONNY BOY 1194
 V D A R LASS 5836

KA YELLOWSTONE 039 HA YELLOWSTONE 4025
KA HAZEL 2153 KA LASS 1710
 KA HAZEL 1968 WERNER WAR PARTY 2417 #
 KA KA HAZEL 1253

Birth Wt	205 Wt	365 Wt	Dam Wean Prod						
68	663	1066	1 WR 100						
CED	BW	VW	YW	Milk	SC	Marb	RE	SM	\$W
+11	+0	+56	+110	+31	+5.2	+31	+4.8	+43	+55

17 KA SECURITY 913
 BULL REG: 20823502 BIRTH DATE: 01/27/23 TATTOO: 913

VDAR GREAT PLAINS 4008 DIETZ GREAT PLAINS 1105
VDAR SECURITY 6701 KA LUCY BE GOOD K407 O6
 VDAR LUCY 9056 VDAR LONE PEAK 2157
 V D A R LUCY 4148 #

KA WALK ON 155 DARS WALK ON 4 TRAVELER 584
KA MARIAS 1933 KA HAZEL 1311
 KA MARIAS 1627 V D A R STOUT 1623
 KA MARIAS 1111

Birth Wt	205 Wt	365 Wt	Dam Wean Prod						
81	662	1174	3 WR 104						
CED	BW	VW	YW	Milk	SC	Marb	RE	SM	\$W
+5	+1.9	+58	+115	+36	+1.45	+3.5	+7.8	+42	+54

18**KA SECURITY 623**

BULL REG: 20823494 BIRTH DATE: 01/19/23 TATTOO: 623

VDAR GREAT PLAINS 4008
VDAR SECURITY 6701
VDAR LUCY 9056DIETZ GREAT PLAINS 1105
KA LUCY BE GOOD K407 O6
VDAR LONE PEAK 2157
V D A R LUCY 4148 #KA WALK ON 155
KA LASS 2038
KA LASS 1637DARS WALK ON 4 TRAVELER 584
KA HAZEL 1311
V D A R SONNY BOY 1194
KA LASS 014

Birth Wt	205 Wt	365 Wt	Dam Wean Prod		HDSOK									
91	737	1150	2 WR 107		CED	BW	WW	YW	Milk	SC	Marb	RE	SM	SW
-3	+4.6	+67	+129	+28	+1.72	+0.34	+1.02	+29	+49					

**19****KA SECURITY 953**

BULL REG: 20823503 BIRTH DATE: 01/28/23 TATTOO: 953

VDAR GREAT PLAINS 4008
VDAR SECURITY 6701
VDAR LUCY 9056DIETZ GREAT PLAINS 1105
KA LUCY BE GOOD K407 O6
VDAR LONE PEAK 2157
V D A R LUCY 4148 #KOU PAL JUNEAU 797 #
KA HAZEL 1555
KA HAZEL 040O C C JUNEAU 807J #
KOU PALS ELBA 187
CROOK MT REALLY WINDY 141 #
KA HAZEL 6009

Birth Wt	205 Wt	365 Wt	Dam Wean Prod		HDSOK									
91	673	1129	5 WR 99		CED	BW	WW	YW	Milk	SC	Marb	RE	SM	SW
+3	+3	+75	+142	+46	+0.94	+0.38	+0.57	+52	+74					

21**KA MAGA 1183**

BULL REG: 20825537 BIRTH DATE: 02/14/23 TATTOO: 1183

V D A R MAGA 3068
VDAR MAGA 2121
V D A R BEAUTY 0352V D A R CEDAR WIND 5126
V D A R BEAUTY 1672
V D A R ROYAL DUKE 4047
VDAR BEAUTY 4627V D A R STOUT 1623
KA LASS 1710
KA LASS 1214V D A R BLACK CEDAR 8380
V D A R LASS 0464
CONNEALY PACKER 547 #
KA LASS 9033

Birth Wt	205 Wt	365 Wt	Dam Wean Prod		HDSOK									
101	819	1283	4 WR 106		CED	BW	WW	YW	Milk	SC	Marb	RE	SM	SW
+2	+4.4	+72	+126	+24	+2.23	+0.05	+0.19	+58	+56					

20**KA SECURITY 303**

BULL REG: 20823478 BIRTH DATE: 01/11/23 TATTOO: 303

VDAR GREAT PLAINS 4008
VDAR SECURITY 6701
VDAR LUCY 9056DIETZ GREAT PLAINS 1105
KA LUCY BE GOOD K407 O6
VDAR LONE PEAK 2157
V D A R LUCY 4148 #COLE CREEK BLACK CEDAR 46P #
KA LASS 038
KA LASS 7004C H QUANTUM 6247 #
COLE CREEK CLOVA JUANADA 67
HERO 6267 OF R R 2418 #
K A LASS 1020

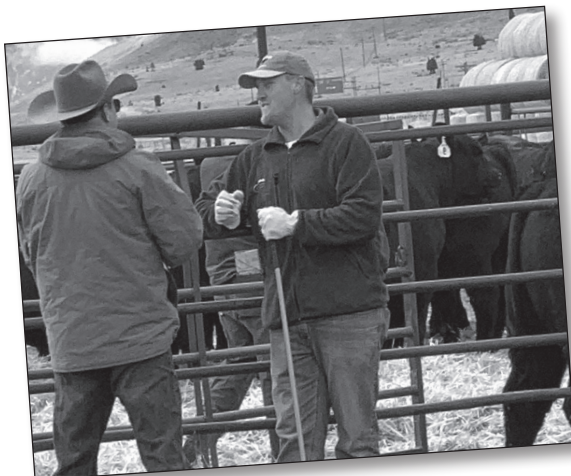
Birth Wt	205 Wt	365 Wt	Dam Wean Prod		HDSOK									
87	644	1084	7 WR 103		CED	BW	WW	YW	Milk	SC	Marb	RE	SM	SW
+5	+2.3	+52	+108	+32	+1.97	+0.43	+0.43	+26	+46					

22**KA MAGA 1193**

BULL REG: 20825538 BIRTH DATE: 02/15/23 TATTOO: 1193

V D A R MAGA 3068
VDAR MAGA 2121
V D A R BEAUTY 0352V D A R CEDAR WIND 5126
V D A R BEAUTY 1672
V D A R ROYAL DUKE 4047
VDAR BEAUTY 4627KA WALK ON 155
KA MISS WIX 1820
KA MISS WIX 1213DARS WALK ON 4 TRAVELER 584
KA HAZEL 1311
CONNEALY PACKER 547 #
KA MISS WIX 5016

Birth Wt	205 Wt	365 Wt	Dam Wean Prod		HDSOK									
85	772	1158	4 WR 106		CED	BW	WW	YW	Milk	SC	Marb	RE	SM	SW
+7	+1.4	+57	+108	+37	+0.68	+0.72	+0.06	+75	+61					





26 KA SOUTHSIDE 683

BULL REG: 20823496 BIRTH DATE: 01/21/23 TATTOO: 683

K C F BENNETT SOUTHSIDE # NICHOLS EXTRA K205 #
KA BENNETT SOUTHSIDE 097 K C F MISS 208 S11 #
 KA MARIAS 1534 # KA BLACK CEDAR 080
 KA MARIAS 7007
 KA WALK ON 155 DARS WALK ON 4 TRAVELER 584
KA BETTY 1955 KA HAZEL 1311
 KA BETTY 1505 GINGER HILL TREASURE 233
 KA BETTY 1330

Birth Wt	205 Wt	365 Wt	Dam Wean Prod						
98	685	1127	3 WR 103						
CED	BW	VW	YW	Milk	SC	Marb	RE	\$M	\$W
-7	+5.8	+64	+121	+34	+4.8	-.24	+52	+42	+50

23 KA SOUTHSIDE 053

BULL REG: 20823469 BIRTH DATE: 01/06/23 TATTOO: 053

K C F BENNETT SOUTHSIDE # NICHOLS EXTRA K205 #
KA BENNETT SOUTHSIDE 097 K C F MISS 208 S11 #
 KA MARIAS 1534 # KA BLACK CEDAR 080
 KA MARIAS 7007
 VDAR SHOWDOWN 7236 V D A R SONNY BOY 1194
KA HAZEL 2048 V D A R FOREVER LADY 1409 #
 KA HAZEL 1456 V D A R CEDAR WIND 8111 #
 KA HAZEL 7048

Birth Wt	205 Wt	365 Wt	Dam Wean Prod						
87	722	1144	2 WR 106						
CED	BW	VW	YW	Milk	SC	Marb	RE	\$M	\$W
+2	+3.5	+69	+130	+33	+2.02	+16	+66	+50	+58

27 KA GRAND CANYON 083

BULL REG: 20825526 BIRTH DATE: 01/06/23 TATTOO: 083

V D A R CEDAR WIND 1064 V D A R CEDAR WIND 8111 #
VDAR GRAND CANYON 2300 V D A R LASS 2526
 V D A R LASS 2559 # V D A R SENTINEL 3016
 V D A R LASS 6305
 GINGER HILL TREASURE 233 GINGER HILL TREASURE 804
KA BEAUTY 1508 GINGER HILL HELEN 880 #
 KA BEAUTY 1343 CROOK MT WINDY 17 #
 KA BEAUTY 5021

Birth Wt	205 Wt	365 Wt	Dam Wean Prod						
69	679	1082	6 WR 93						
CED	BW	VW	YW	Milk	SC	Marb	RE	\$M	\$W
+15	-2	+46	+82	+17	+2.8	+31	+40	+88	+47

24 KA SOUTHSIDE 073

BULL REG: 20823471 BIRTH DATE: 01/06/23 TATTOO: 073

K C F BENNETT SOUTHSIDE # NICHOLS EXTRA K205 #
KA BENNETT SOUTHSIDE 097 K C F MISS 208 S11 #
 KA MARIAS 1534 # KA BLACK CEDAR 080
 KA MARIAS 7007
 V D A R HERO 7072 DFA HERO 6017 #
KA BEAUTY 1629 V D A R HAZEL 0319
 KA BEAUTY 5021 B C C BUSHWACKER 41-93 #
 KA BEAUTY 2212

Birth Wt	205 Wt	365 Wt	Dam Wean Prod						
92	633	1084	6 WR 96						
CED	BW	VW	YW	Milk	SC	Marb	RE	\$M	\$W
+4	+2.6	+59	+108	+27	+1.71	-.28	+41	+55	+54

28 KA GRAND CANYON 603

BULL REG: 20825531 BIRTH DATE: 01/18/23 TATTOO: 603

V D A R CEDAR WIND 1064 V D A R CEDAR WIND 8111 #
VDAR GRAND CANYON 2300 V D A R LASS 2526
 V D A R LASS 2559 # V D A R SENTINEL 3016
 V D A R LASS 6305
 KOU PAL JUNEAU 797 # O C C JUNEAU 807J #
KA MISS WIX 1643 KOU PALS ELBA 187
 KA MISS WIX 008 COLE CREEK BLACK CEDAR 46P #
 KA MISS WIX 8026

Birth Wt	205 Wt	365 Wt	Dam Wean Prod						
71	605	1095	6 WR 97						
CED	BW	VW	YW	Milk	SC	Marb	RE	\$M	\$W
+8	+1.8	+61	+108	+28	+1.56	+13	+22	+67	+60

25 KA SOUTHSIDE 1023

BULL REG: 20823508 BIRTH DATE: 02/02/23 TATTOO: 1023

K C F BENNETT SOUTHSIDE # NICHOLS EXTRA K205 #
KA BENNETT SOUTHSIDE 097 K C F MISS 208 S11 #
 KA MARIAS 1534 # KA BLACK CEDAR 080
 KA MARIAS 7007
 V D A R FOUR CORNERS 8232 DFA HERO 6017 #
KA HAZEL 1514 G K A F ROSETTA 102 #
 KA HAZEL 1118 V D A R REALLY WINDY 4097 #
 KA HAZEL 2201

Birth Wt	205 Wt	365 Wt	Dam Wean Prod						
102	692	1137	5 WR 97						
CED	BW	VW	YW	Milk	SC	Marb	RE	\$M	\$W
-4	+4.7	+67	+105	+25	+1.21	+16	+19	+57	+55

29 KA BLACK MASS 043

BULL REG: 20823468 BIRTH DATE: 01/05/23 TATTOO: 043

B BAR WINDY 79 CROOK MT REALLY WINDY 141 #
B BAR BLACK MASS 3045 B BAR LADY JEWEL 116 #
 B BAR QUEEN 304 # SITZ RLS ALLIANCE 7164
 B BAR QUEEN 557 #
 VDAR HIGH CALIBER KA BLACK CEDAR 080
KA HAZEL 2156 V D A R LASS 3133
 KA HAZEL 1714 V D A R HERO 7072
 KA HAZEL 1555

Birth Wt	205 Wt	365 Wt	Dam Wean Prod						
67	710	1105	1 WR 107						
CED	BW	VW	YW	Milk	SC	Marb	RE	\$M	\$W
+9	-0.7	+58	+103	+26	+0.75	+44	+32	+82	+61

30**KA BLACK MASS 453**

BULL REG: 20823487 BIRTH DATE: 01/14/23 TATTOO: 453

B BAR WINDY 79
B BAR BLACK MASS 3045
 B BAR QUEEN 304 #

VDAR GALLATIN 7586
KA LASS 2114
 KA LASS 1990

CROOK MT REALLY WINDY 141 #
 B BAR LADY JEWEL 116 #
 SITZ RLS ALLIANCE 7164
 B BAR QUEEN 557 #

V D A R SONNY BOY 1194
 V D A R LASS 2525
 DIETZ GREAT PLAINS 1105
 KA LASS 1301

Birth Wt	205 Wt	365 Wt	Dam Wean Prod		HDSOK									
86	730	1132	1 WR 110		CED	BW	WW	YW	Milk	SC	Marb	RE	SM	SW
+7	+0.4	+50	+88	+31	+97	+33	+50	+74	+56					

**31****KA BLACK MASS 643**

BULL REG: 20823495 BIRTH DATE: 01/20/23 TATTOO: 643

B BAR WINDY 79
B BAR BLACK MASS 3045
 B BAR QUEEN 304 #

V D A R CEDAR WIND 8111 #
KA HAZEL 1427
 KA HAZEL 3017 #

CROOK MT REALLY WINDY 141 #
 B BAR LADY JEWEL 116 #
 SITZ RLS ALLIANCE 7164
 B BAR QUEEN 557 #

COLE CREEK CEDAR RIDGE 1V #
 V D A R CHLOE 9727
 G D A R DUTCH 5226 #
 K A HAZEL 812

Birth Wt	205 Wt	365 Wt	Dam Wean Prod		HDSOK									
80	635	1115	7 WR 98		CED	BW	WW	YW	Milk	SC	Marb	RE	SM	SW
+4	+1.6	+51	+86	+23	+1.32	+24	+21	+78	+51					

32**KA BLACK MASS 023**

BULL REG: 20823467 BIRTH DATE: 01/03/23 TATTOO: 023

B BAR WINDY 79
B BAR BLACK MASS 3045
 B BAR QUEEN 304 #

KA BENNETT SOUTHSIDE 097
KA MISS WIX 2130
 KA MISS WIX 1611

CROOK MT REALLY WINDY 141 #
 B BAR LADY JEWEL 116 #
 SITZ RLS ALLIANCE 7164
 B BAR QUEEN 557 #

K C F BENNETT SOUTHSIDE #
 KA MARIAS 1534 #
 V D A R HERO 7072
 KA MISS WIX 5013 #

Birth Wt	205 Wt	365 Wt	Dam Wean Prod		HDSOK									
61	718	1052	1 WR 108		CED	BW	WW	YW	Milk	SC	Marb	RE	SM	SW
+13	-2	+63	+103	+25	+73	+38	+35	+52	+65					

33**KA TIMELESS 523**

BULL REG: 20823489 BIRTH DATE: 01/16/23 TATTOO: 523

WMR TIMELESS 458 #
WMR TIMELESS 081
 WMR LUCY 910 #

V D A R SONNY BOY 1194
KA MISS WIX 1912
 KA MISS WIX 1223

LEACHMAN RIGHT TIME 338-5605 #
 WMR BLACKCAP 521
 CONNEALY PACKER 547 #
 WMR LUCY 720

V D A R HERO 7072
 V D A R LASS 2582
 SITZ RAINMAKER 11127 #
 KA MISS WIX 4027

Birth Wt	205 Wt	365 Wt	Dam Wean Prod		HDSOK									
89	678	1152	3 WR 104		CED	BW	WW	YW	Milk	SC	Marb	RE	SM	SW
+3	+4.4	+74	+138	+24	+1.41	+65	+	+59	+54					

34**KA TIMELESS 803**

BULL REG: 20823500 BIRTH DATE: 01/23/23 TATTOO: 803

WMR TIMELESS 458 #
WMR TIMELESS 081
 WMR LUCY 910 #

V D A R HERO 7072
KA HAZEL 1714
 KA HAZEL 1555

LEACHMAN RIGHT TIME 338-5605 #
 WMR BLACKCAP 521
 CONNEALY PACKER 547 #
 WMR LUCY 720

DFA HERO 6017 #
 V D A R HAZEL 0319
 KOUPAL JUNEAU 797 #
 KA HAZEL 040

Birth Wt	205 Wt	365 Wt	Dam Wean Prod		HDSOK									
78	664	1074	4 WR 98		CED	BW	WW	YW	Milk	SC	Marb	RE	SM	SW
+8	+1.4	+72	+114	+24	+38	+70	-06	+74	+71					

35**KA TIMELESS 793**

BULL REG: 20823499 BIRTH DATE: 01/22/23 TATTOO: 793

WMR TIMELESS 458 #
WMR TIMELESS 081
 WMR LUCY 910 #

V D A R SONNY BOY 1194
KA LASS 1835
 KA LASS 9033

LEACHMAN RIGHT TIME 338-5605 #
 WMR BLACKCAP 521
 CONNEALY PACKER 547 #
 WMR LUCY 720

V D A R HERO 7072
 V D A R LASS 2582
 CROOK MT REALLY WINDY 141 #
 KA LASS 4009

Birth Wt	205 Wt	365 Wt	Dam Wean Prod		HDSOK									
89	656	1104	4 WR 102		CED	BW	WW	YW	Milk	SC	Marb	RE	SM	SW
+3	+1.7	+57	+100	+24	+1.09	+24	+55	+66	+55					

36**KA TIMELESS 993**

BULL REG: 20823506 BIRTH DATE: 01/31/23 TATTOO: 993

WMR TIMELESS 458 # LEACHMAN RIGHT TIME 338-5605 #
 WMR TIMELESS 081 WMR BLACKCAP 521
 WMR LUCY 910 # CONNEALY PACKER 547 #
 WMR LUCY 720

V D A R CHURCHILL 1063 DFA HERO 6017 #
 KA LUCY 1620 V D A R FOREVER LADY 1409 #
 KA LUCY 1312 V D A R REALLY WINDY 4097 #
 KA LUCY 9047

Birth Wt	205 Wt	365 Wt	Dam Wean Prod			HD50K									
94	687	1149	6WR95			CED	BW	VW	YW	Milk	SC	Marb	RE	\$M	\$W
+0	+3.3	+74	+127	+21	+1.27	+0.77	+0.50	+0.44	+0.52	+0.57					

39**KA COUNTRY MILE 1253**

BULL REG: 20823509 BIRTH DATE: 02/19/23 TATTOO: 1253

SHOSHONE PORTER 6113 HORSE BUTTE 1126 OF 3128
 GINGER HILL COUNTRY MILE 068 SHOSHONE PRUDENCE 6113
 GINGER HILL EVA 825 GINGER HILL TEQUILA 305
 GINGER HILL EVA 980 #

V D A R CEDAR WIND 5126 V D A R CEDAR WIND 8111 #
 KA MISS WIX 2015 V D A R BEAUTY 4321 #
 KA MISS WIX 1643 KOUPAL JUNEAU 797 #
 KA MISS WIX 008

Birth Wt	205 Wt	365 Wt	Dam Wean Prod			HD50K									
92	791	1156	2 WR 116			CED	BW	VW	YW	Milk	SC	Marb	RE	\$M	\$W
+0	+4	+52	+94	+30	+1.26	+0.25	+0.30	+0.45	+0.47						

37**KA TIMELESS 1013**

BULL REG: 20823507 BIRTH DATE: 02/02/23 TATTOO: 1013

WMR TIMELESS 458 # LEACHMAN RIGHT TIME 338-5605 #
 WMR TIMELESS 081 WMR BLACKCAP 521
 WMR LUCY 910 # CONNEALY PACKER 547 #
 WMR LUCY 720

VDAR SHOWDOWN 7236 V D A R SONNY BOY 1194
 KA HAZEL 1941 V D A R FOREVER LADY 1409 #
 KA HAZEL 1130 COLE CREEK BLACK CEDAR 46P #
 KA HAZEL 6017

Birth Wt	205 Wt	365 Wt	Dam Wean Prod			HD50K									
95	647	1137	3 WR 104			CED	BW	VW	YW	Milk	SC	Marb	RE	\$M	\$W
+0	+4.6	+61	+93	+18	+1.27	+0.46	+0.32	+0.78	+0.51						

**40****KA MANHATTAN 353**

BULL REG: 20823482 BIRTH DATE: 01/12/23 TATTOO: 353

W R A MIRROR IMAGE T10 # H A IMAGE MAKER 0415 #
 VDAR MANHATTAN 1379 W R A EILEEN BAR 115P
 V D A R LASS 4113 # V D A R CEDAR WIND 8111 #
 V D A R LASS 2559 #

VDAR SHOWDOWN 7236 V D A R SONNY BOY 1194
 KA HAZEL 1930 V D A R FOREVER LADY 1409 #
 KA HAZEL 1677 V D A R WALLACE 2044
 KA HAZEL 6009

Birth Wt	205 Wt	365 Wt	Dam Wean Prod			HD50K									
82	650	1106	3 WR 96			CED	BW	VW	YW	Milk	SC	Marb	RE	\$M	\$W
+9	+0.4	+46	+76	+28	-0.16	+0.06	-0.14	+0.73	+0.56						

38**KA COUNTRY MILE 693**

BULL REG: 20823497 BIRTH DATE: 01/21/23 TATTOO: 693

SHOSHONE PORTER 6113 HORSE BUTTE 1126 OF 3128
 GINGER HILL COUNTRY MILE 068 SHOSHONE PRUDENCE 6113
 GINGER HILL EVA 825 GINGER HILL TEQUILA 305
 GINGER HILL EVA 980 #

VDAR HIGH CALIBER KA BLACK CEDAR 080
 KA LASS 2010 V D A R LASS 3133
 KA LASS 1794 DIETZ GREAT PLAINS 1105
 KA LASS 1350

Birth Wt	205 Wt	365 Wt	Dam Wean Prod			HD50K									
91	740	1159	2 WR 108			CED	BW	VW	YW	Milk	SC	Marb	RE	\$M	\$W
-7	+5.2	+55	+98	+30	+1.18	+0.25	+0.38	+0.51	+0.45						

41**KA MANHATTAN 583**

BULL REG: 20823493 BIRTH DATE: 01/17/23 TATTOO: 583

W R A MIRROR IMAGE T10 # H A IMAGE MAKER 0415 #
 VDAR MANHATTAN 1379 W R A EILEEN BAR 115P
 V D A R LASS 4113 # V D A R CEDAR WIND 8111 #
 V D A R LASS 2559 #

VDAR HIGH CALIBER KA BLACK CEDAR 080
 KA LUCY 2084 V D A R LASS 3133
 KA LUCY 1447 V D A R CEDAR WIND 8111 #
 KA LUCY 9008

Birth Wt	205 Wt	365 Wt	Dam Wean Prod			HD50K									
73	712	1118	2 WR 102			CED	BW	VW	YW	Milk	SC	Marb	RE	\$M	\$W
+5	+0.6	+58	+87	+25	+1.25	+0.32	+0.14	+0.65	+0.64						



45 KA MANHATTAN 203
 BULL REG: 20823475 BIRTH DATE: 01/09/23 TATTOO: 203

W R A MIRROR IMAGE T10 # H A IMAGE MAKER 0415 #
 V D A R LASS 4113 # W R A EILEEN BAR 115P
 V D A R CEDAR WIND 8111 #
 V D A R LASS 2559 #

V D A R SONNY BOY 1194 V D A R HERO 7072
 V D A R LASS 2582
 KA HAZEL 2198 COLE CREEK BLACK CEDAR 46P #
 KA HAZEL 1130 KA HAZEL 6017

Birth Wt	205 Wt	365 Wt	Dam Wean Prod						
83	673	1009	1 WR 101						
CED	BW	WW	YW	Milk	SC	Marb	RE	SM	SW
+0	+1.8	+37	+66	+32	+7.5	-0.6	+1.0	+53	+43

42 KA MANHATTAN 983
 BULL REG: 20823505 BIRTH DATE: 01/31/23 TATTOO: 983

W R A MIRROR IMAGE T10 # H A IMAGE MAKER 0415 #
 V D A R LASS 4113 # W R A EILEEN BAR 115P
 V D A R CEDAR WIND 8111 #
 V D A R LASS 2559 #

H A IMAGE MAKER 0415 # HERO 6267 OF R R 2418 #
 H A RITO BLACKCAP 9038
 KA LASS 029 S A V 8180 TRAVELER 004 #
 KA LASS 7026 KA LASS 4009

Birth Wt	205 Wt	365 Wt	Dam Wean Prod						
72	618	1080	9 WR 100						
CED	BW	WW	YW	Milk	SC	Marb	RE	SM	SW
+13	-0.6	+52	+82	+41	+1.49	+25	-0.4	+87	+72



46 KA WALK ON 813
 BULL REG: 20825533 BIRTH DATE: 01/23/23 TATTOO: 813

KA WALK ON 155 DARS WALK ON 4 TRAVELER 584
 KA HAZEL 1311
 KA WALK ON 341 COLE CREEK BLACK CEDAR 46P #
 KA LASS 014 K A LASS 1007

WERNER WAR PARTY 2417 # CONNEALY ONWARD #
 BAAR USA LADY JAYE 489
 KA MISS WIX 1762 CROOK MT REALLY WINDY 141 #
 K A MISS WIX 8021 # KA MISS WIX 2215

Birth Wt	205 Wt	365 Wt	Dam Wean Prod						
94	644	1111	5 WR 99						
CED	BW	WW	YW	Milk	SC	Marb	RE	SM	SW
+5	+3.1	+59	+109	+24	+1.44	+1.5	+0.97	+62	+47

43 KA MANHATTAN 563
 BULL REG: 20823492 BIRTH DATE: 01/17/23 TATTOO: 563

W R A MIRROR IMAGE T10 # H A IMAGE MAKER 0415 #
 V D A R LASS 4113 # W R A EILEEN BAR 115P
 V D A R CEDAR WIND 8111 #
 V D A R LASS 2559 #

DIETZ GREAT PLAINS 1105 O C C GREAT PLAINS 943G #
 V D A R HAZEL 3704
 KA LASS 0116 E A R FREEDOM X26 44S
 KA LASS 1350 KA LASS 5024

Birth Wt	205 Wt	365 Wt	Dam Wean Prod						
72	721	1020	2 WR 104						
CED	BW	WW	YW	Milk	SC	Marb	RE	SM	SW
+9	+0.1	+60	+99	+26	+1.42	+21	+0.30	+76	+63

47 KA WALK ON 933
 BULL REG: 20825534 BIRTH DATE: 01/27/23 TATTOO: 933

KA WALK ON 155 DARS WALK ON 4 TRAVELER 584
 KA HAZEL 1311
 KA WALK ON 341 COLE CREEK BLACK CEDAR 46P #
 KA LASS 014 K A LASS 1007

H A IMAGE MAKER 0415 # HERO 6267 OF R R 2418 #
 H A RITO BLACKCAP 9038
 KA MISS WIX 1706 CROOK MT REALLY WINDY 141 #
 K A MISS WIX 8021 # KA MISS WIX 2215

Birth Wt	205 Wt	365 Wt	Dam Wean Prod						
86	605	1103	4 WR 109						
CED	BW	WW	YW	Milk	SC	Marb	RE	SM	SW
+4	+2.6	+43	+81	+36	+1.70	+0.53	+0.47	+60	+47

44 KA MANHATTAN 553
 BULL REG: 20823491 BIRTH DATE: 01/17/23 TATTOO: 553

W R A MIRROR IMAGE T10 # H A IMAGE MAKER 0415 #
 V D A R LASS 4113 # W R A EILEEN BAR 115P
 V D A R CEDAR WIND 8111 #
 V D A R LASS 2559 #

V D A R CEDAR WIND 5126 V D A R CEDAR WIND 8111 #
 V D A R BEAUTY 4321 #
 KA LUCY 2022 CROOK MT REALLY WINDY 141 #
 KA LUCY 8020 KA LUCY 6018

Birth Wt	205 Wt	365 Wt	Dam Wean Prod						
68	667	1021	2 WR 105						
CED	BW	WW	YW	Milk	SC	Marb	RE	SM	SW
+11	-0.3	+55	+89	+26	-0.03	-0.11	-0.26	+79	+63

48**KA WALK ON 1003**

BULL REG: 20825535 BIRTH DATE: 02/01/23 TATTOO: 1003

KA WALK ON 155
KA WALK ON 341
 KA LASS 014

WERNER WAR PARTY 2417 #
KA LASS 1746
 KA LASS 1403

DARS WALK ON 4 TRAVELER 584
 KA HAZEL 1311
 COLE CREEK BLACK CEDAR 46P #
 K A LASS 1007

CONNELLY ONWARD #
 BAAR USA LADY JAYE 489
 V D A R CEDAR WIND 8111 #
 KA LASS 1243

Birth Wt	205 Wt	365 Wt	Dam Wean Prod			HDSOK									
74	676	1119	5 WR 108			CED	BW	VW	YW	Milk	SC	Marb	RE	\$M	\$W
+11	+0.4	+51	+95	+28	+80	+1.8	+4.4	+57	+53						

52**KA BLACK MASS 363**

BULL REG: 20823483 BIRTH DATE: 01/12/23 TATTOO: 363

B BAR WINDY 79
B BAR BLACK MASS 3045
 B BAR QUEEN 304 #

VDAR GALLATIN 7586
KA HAZEL 2124
 KA HAZEL 1941

CROOK MT REALLY WINDY 141 #
 B BAR LADY JEWEL 116 #
 SITZ RLS ALLIANCE 7164
 B BAR QUEEN 557 #

V D A R SONNY BOY 1194
 V D A R LASS 2525
 VDAR SHOWDOWN 7236
 KA HAZEL 1130

Birth Wt	205 Wt	365 Wt	Dam Wean Prod			HDSOK									
86	654	1020	1 WR 98			CED	BW	VW	YW	Milk	SC	Marb	RE	\$M	\$W
+6	+1.4	+60	+107	+25	+58	+3.2	+90	+77	+60						

49**KA COUNTRY MILE 403**

BULL REG: 20823485 BIRTH DATE: 01/13/23 TATTOO: 403

SHOSHONE PORTER 6113
GINGER HILL COUNTRY MILE 068
 GINGER HILL EVA 825

VDAR HIGH CALIBER
KA LUCY 2017
 KA LUCY 1759

HORSE BUTTE 1126 OF 3128
 SHOSHONE PRUDENCE 6113
 GINGER HILL TEQUILA 305
 GINGER HILL EVA 980 #

KA BLACK CEDAR 080
 V D A R LASS 3133
 KA WALK ON 155
 KA LUCY 1429

Birth Wt	205 Wt	365 Wt	Dam Wean Prod			HDSOK									
86	634	1034	2 WR 102			CED	BW	VW	YW	Milk	SC	Marb	RE	\$M	\$W
+2	+3.3	+49	+85	+33	-10	-22	+22	+66	+49						

**50****KA COUNTRY MILE 973**

BULL REG: 20823504 BIRTH DATE: 01/30/23 TATTOO: 973

SHOSHONE PORTER 6113
GINGER HILL COUNTRY MILE 068
 GINGER HILL EVA 825

V D A R CEDAR WIND 5126
KA BECKY 2014
 KA BECKY 1884

HORSE BUTTE 1126 OF 3128
 SHOSHONE PRUDENCE 6113
 GINGER HILL TEQUILA 305
 GINGER HILL EVA 980 #

V D A R CEDAR WIND 8111 #
 V D A R BEAUTY 4321 #
 K A STOUT 676
 KA BECKY 021

Birth Wt	205 Wt	365 Wt	Dam Wean Prod			HDSOK									
82	706	1092	2 WR 105			CED	BW	VW	YW	Milk	SC	Marb	RE	\$M	\$W
+0	+4.5	+49	+85	+31	+2.59	+4.8	+51	+60	+48						

53**KA WINSTON 1123**

BULL REG: 20825536 BIRTH DATE: 02/08/23 TATTOO: 1123

V D A R WINSTON 2165
VDAR WINSTON 2150
 VDAR LASS 8148

VDAR GALLATIN 7586
KA BEAUTY 2143
 KA BEAUTY 1949

V D A R CHURCHILL 1063
 V D A R LASS 3114
 V D A R SONNY BOY 1194
 V D A R LASS 5836

V D A R SONNY BOY 1194
 V D A R LASS 2525
 VDAR SHOWDOWN 7236
 KA BEAUTY 1113

Birth Wt	205 Wt	365 Wt	Dam Wean Prod			HDSOK									
78	755	1104	1 WR 113			CED	BW	VW	YW	Milk	SC	Marb	RE	\$M	\$W
+8	+1.6	+71	+124	+34	+1.52	+4.3	+10	+50	+69						

51**KA BLACK MASS 253**

BULL REG: 20823477 BIRTH DATE: 01/10/23 TATTOO: 253

B BAR WINDY 79
B BAR BLACK MASS 3045
 B BAR QUEEN 304 #

V D A R SONNY BOY 1194
KA LUCY 2173
 KA LUCY 1447

CROOK MT REALLY WINDY 141 #
 B BAR LADY JEWEL 116 #
 SITZ RLS ALLIANCE 7164
 B BAR QUEEN 557 #

V D A R HERO 7072
 V D A R LASS 2582
 V D A R CEDAR WIND 8111 #
 KA LUCY 9008

Birth Wt	205 Wt	365 Wt	Dam Wean Prod			HDSOK									
68	721	1020	1 WR 108			CED	BW	VW	YW	Milk	SC	Marb	RE	\$M	\$W
+10	+0.4	+47	+80	+24	+57	+0.4	+46	+77	+53						

54**KA WINSTON 013**

BULL REG: 20825499 BIRTH DATE: 01/01/23 TATTOO: 013

V D A R WINSTON 2165
VDAR WINSTON 2150
 VDAR LASS 8148

VDAR MANHATTAN 1379
KA LUCY 116
 KA LUCY 1536

V D A R CHURCHILL 1063
 V D A R LASS 3114
 V D A R SONNY BOY 1194
 V D A R LASS 5836

W R A MIRROR IMAGE T10 #
 V D A R LASS 4113 #
 KOUPAL JUNEAU 797 #
 KA LUCY 1229

Birth Wt	205 Wt	365 Wt	Dam Wean Prod			HDSOK									
61	674	1007	1 WR 101			CED	BW	VW	YW	Milk	SC	Marb	RE	\$M	\$W
+9	-1.4	+46	+76	+32	+1.04	+1.1	+22	+55	+56						

Sale Notes



Thank You
FOR ATTENDING THIS YEAR'S SALE.
HOPE TO SEE YOU AGAIN NEXT YEAR!





8620 Highline Road
Manhattan, MT, 59741

Presorted
FIRST CLASS
US Postage
Paid
Ballyhoo Printing
59457

FIRST CLASS



FOCUS ON THE FACTORY
Bull Sale

Saturday
March 2, 2024

Headwaters Livestock Auction
Three Forks, Montana
Lunch at noon • Sale at 1:00 pm

Selling **55**
ANGUS BULLS